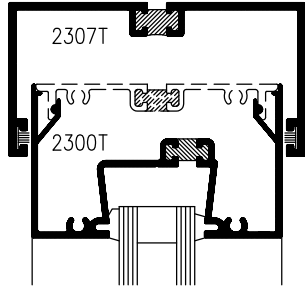


# GLACIER 2000 RESIDENTIAL THERMALLY BROKEN DOORS

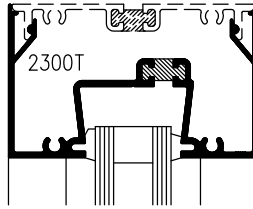
# A 23



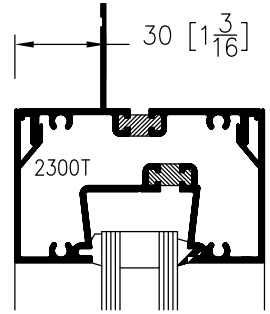
**9D**

DEFLECTION HEADER OPTION

## DETAILS 2300T FRAMING

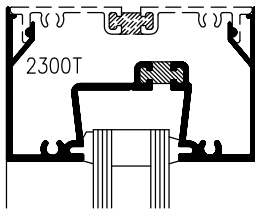


**12**

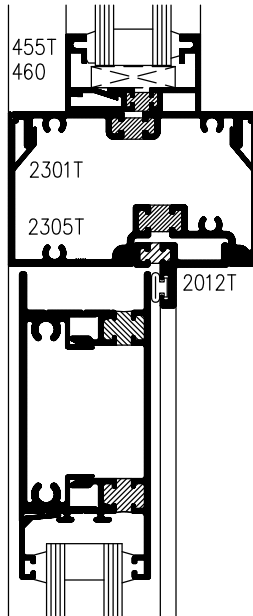


**9N**

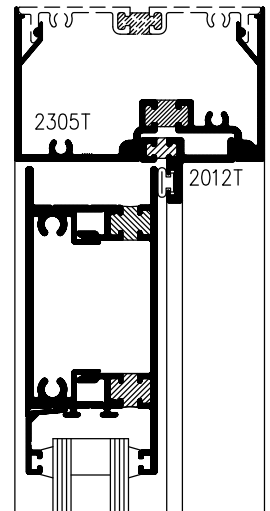
NAIL-ON OPTION



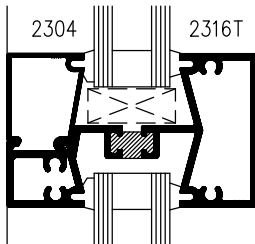
**9**



**11**



**13**



**8**

NOTES FOR 2300T (2"x3 1/4") AND 2050T (2"x4 1/2")  
FRAMING SYSTEMS

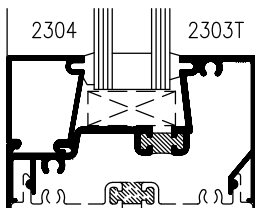
STOREFRONT GLAZING SYSTEM'S DESIGN GUIDELINES APPLY

DOOR DESIGNED FOR "OPEN OUT" ONLY

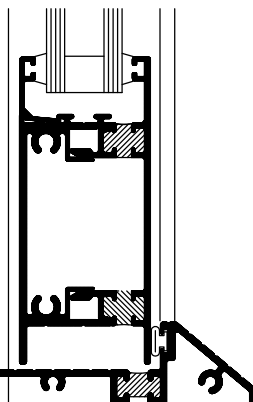
HEAD PROTECTION FROM DRIVING RAIN IS RECOMMENDED  
(DESIGN THE DOOR UNDER AN OVERHANG)

HEAD FLASHING AND THROUGH-WALL SILL FLASHING,  
C/W NECESSARY END DAMS, SHOULD BE UTILIZED

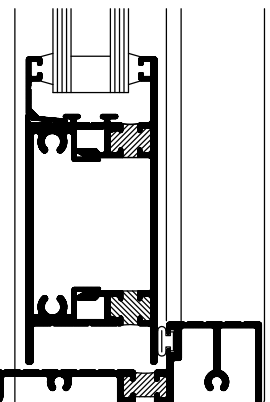
FRAME-TO-SILL FLASHING EXTERIOR JOINT  
SHOULD BE LEFT UNSEALED



**7**



**10**



**10**

CONSULT WITH YOUR REPRESENTATIVE FOR OTHER THRESHOLD OPTIONS